

# MONTHLY MEMBERSHIP PROGRESS REPORT

LOCATION REP OF SRI LANKA

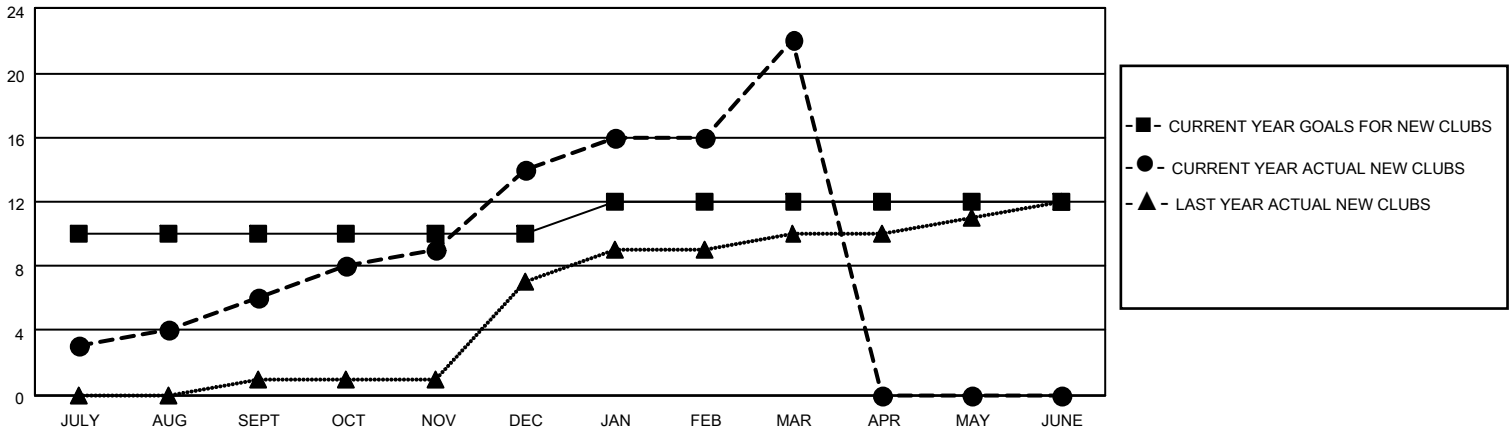
District 306 C1

Results as of: 3/31/2022

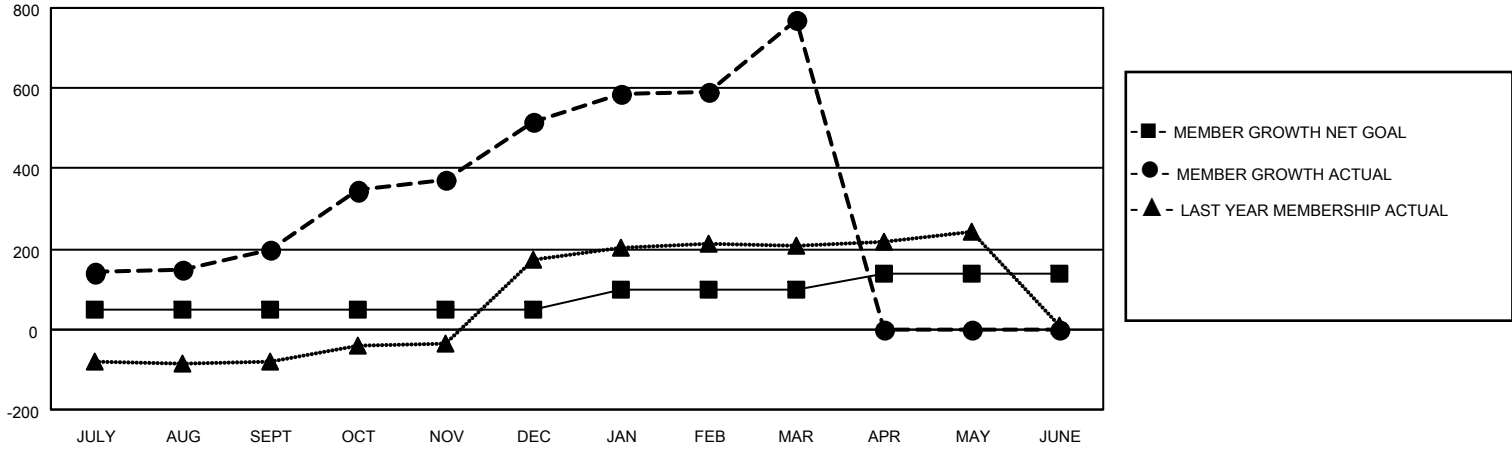
Clubs			
RESULTS FOR 2021-2022			
QUARTER	NEW CLUB GOAL	NEW CLUBS	DROPPED CLUBS
JULY/AUG/SEPT	10	6	1
OCT/NOV/DEC	0	8	0
JAN/FEB/MAR	2	8	0
APR/MAY/JUNE	0	0	0

Members			
RESULTS FOR 2021-2022			
QUARTER	MEMBER GROWTH NET GOAL	MEMBER GROWTH ACTUAL	DROPPED MEMBERS ACTUAL (including transfers)
JULY/AUG/SEPT	50	361	93
OCT/NOV/DEC	0	376	48
JAN/FEB/MAR	50	289	28
APR/MAY/JUNE	40	0	0

**GOALS AND ACTUAL NEW CLUBS CUMULATIVE**



**GOALS AND ACTUAL MEMBERS CUMULATIVE**



**DROPPED CLUBS: 1**

101 CLUBS OF 131 ADDED 1 OR MORE NEW MEMBERS

**GENDER DISTRIBUTION**

MALE	2,808 (75.77%)
FEMALE	897 (24.20%)
NON BINARY	0 (0.00%)
PREFER NOT TO ANSWER	1 (0.03%)

**DROPPED MEMBERS**

[CLICK HERE FOR CUMULATIVE MEMBERSHIP DATA](#)

DECEASED	9
CLUB CANCELLED	52
OTHER	108
<b>TOTAL</b>	<b>169</b>

TOTAL FAMILY UNIT MEMBERS 1,151

FAMILY MEMBERS PAYING HALF DUES 664